



VENON SURFBOARDS

THE MAGIC BOARD IN YOUR QUIVER

#TRENDY #SURF #LIFESTYLE #ESCAPE #FREE MIND

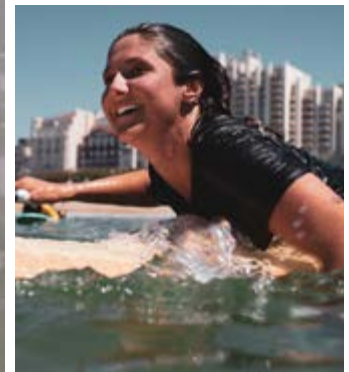
Since 2008, Venon Surfboards has been synonymous for producing quality surfboards for everyone. In 2019 we're taking it to a whole new level.

Surfboard specialist brand inspired by hybrid templates constructed with the finest Materials on the market such as Bennett Foam and Hexel resins.

With a diverse range of performance, fish, hybrid and longboard classic styles we make it straight forward to find your perfect model to suit your style of surfing.

 [@venonsurfboards](#)
[#themagicboardinyourquiver](#)





A close-up photograph of a person's hands working on a large, light-colored foam blank. The person is wearing a dark, short-sleeved shirt and is applying a piece of grey fiberglass cloth to the surface of the foam. The background is a workshop setting with various materials and equipment. The text "FIBERGLASS CLOTH" is written in red, curved letters above the main text.

FIBERGLASS CLOTH

HEXCEL

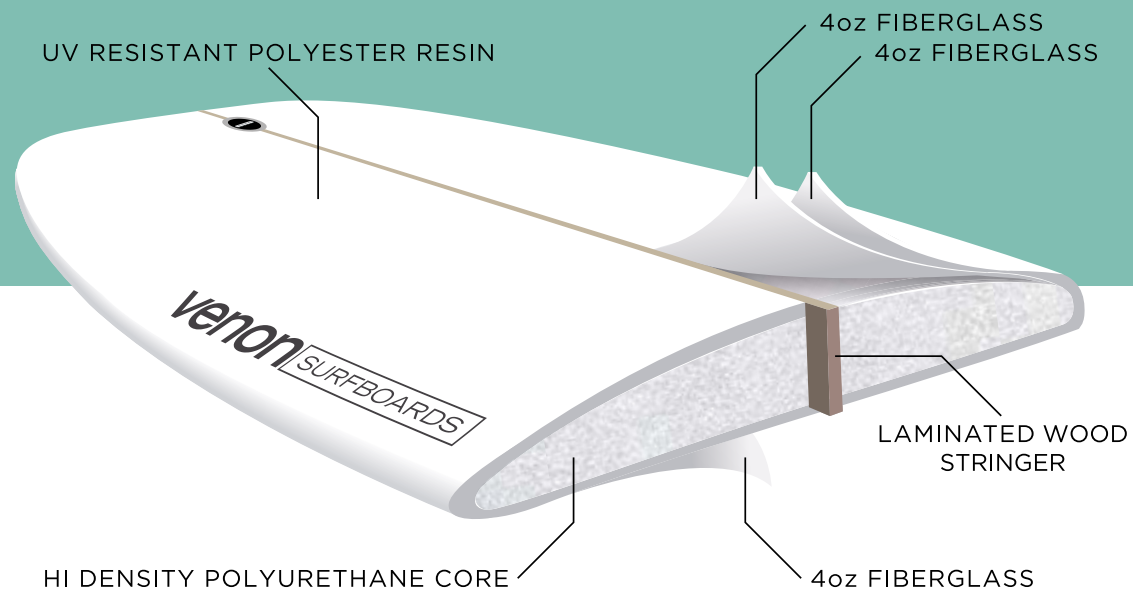
—

BENNETT DION

FOAM BLANKS



PU



PU - POLYESTER/POLYURETHANE

Polyester or PU construction uses **traditional Materials** and laminating techniques to produce a **strong and reliable surfboard** with high quality finishes.

All polyester boards are **CNC milled** from the shapers files and laminated by hand using quality components such as **Hexcel** fiberglass, **Silmar** resin and **Bennett** foam. These boards feature a progressive flex pattern controlled by a high-grade timber stringer and feel very reliable under your feet.

They offer a large variety of surfboard models.



Venon Surfboards



PASTEL



STRAW



SEAGREEN



CREAM



POWDER PINK

Node

5'9" ABC0509004
5'11" ABC0511015

2 Future
 Swallow tail
 Matt finish

SIZE

5'9" x 20^{3/4} x 2^{1/2} | Vol : 32.2 ltr
 5'11" x 21 x 2^{3/4} | Vol : 37 ltr

Spectre

6'3" ABC0603028
6'6" ABC0606044
6'10" ABC0610022

3 Future
 Swallow tail
 Matt finish

SIZE

6'3" x 21 x 2^{5/8} | Vol : 38.8 ltr
 6'6" x 21^{1/2} x 2^{3/4} | Vol : 44 ltr
 6'10" x 22 x 2^{7/8} | Vol : 49.8 ltr

Venon Surfboards



PASTEL



SEAGREEN



BLUE



STRAW



BLUE



POWDER PINK



CREAM

Evo

6'4" ABH0604001
6'6" ABH0606011

2 Future + US box
Squash tail
Matt finish

SIZE

6'4" x 21 x 2^{11/16} | Vol : 39 ltr
6'6" x 21^{3/4} x 2^{3/4} | Vol : 44 ltr

Quokka

6'4" ABH0604020
6'6" ABH0606012

4 Future + US box
Squash tail
Matt finish

SIZE

6'4" x 21^{1/2} x 2^{5/8} | Vol : 40,3 ltr
6'6" x 22 x 2^{3/4} | Vol : 49 ltr

Gopher

6'8" ABH0608009
7'0" ABH0700003

5 Future
Pin tail
Matt finish

SIZE

6'8" x 21^{3/4} x 2^{3/4} | Vol : 44 ltr
7'0" x 22 x 2^{7/8} | Vol : 58 ltr

Venon Surfboards



PASTEL



TEAL



COOL GREY



TEAL



COOL GREY



BLUE



WASABI

Egg

7'2" ABK0702005
7'6" ABK0706008

2 Future + US box
Round Pin tail
Matt finish

SIZE

7'2" x 21 x 2^{1/2} | Vol : 44 ltr
7'6" x 20^{7/8} x 2^{7/8} | Vol : 52 ltr

Zeppelin

8'0" ABK0800018

2 Future + US box
Round Pin tail + Wingers
Matt finish

SIZE

8'0" x 24 x 3 | Vol : 69 ltr

Volute

9'0" ABP0900073

2 Future + US box
Squash tail
Matt finish

SIZE

9'0" x 22^{1/2} x 2^{3/4} | Vol : 69 ltr

Venon Surfboards



PASTEL



BLUE



WASABI



SEAGREEN



CREAM



SEAGREEN



CREAM

Longsoul

9'0" ABP0900020

2 Future + US box
Squash tail
Matt finish

SIZE

9'0" x 22¹/₄ x 3 | Vol : 68 ltr

Landmark

9'2" ABP0902021

US box
Squash tail
Matt finish

SIZE

9'2" x 22⁷/₈ x 3 | Vol : 69 ltr

Log

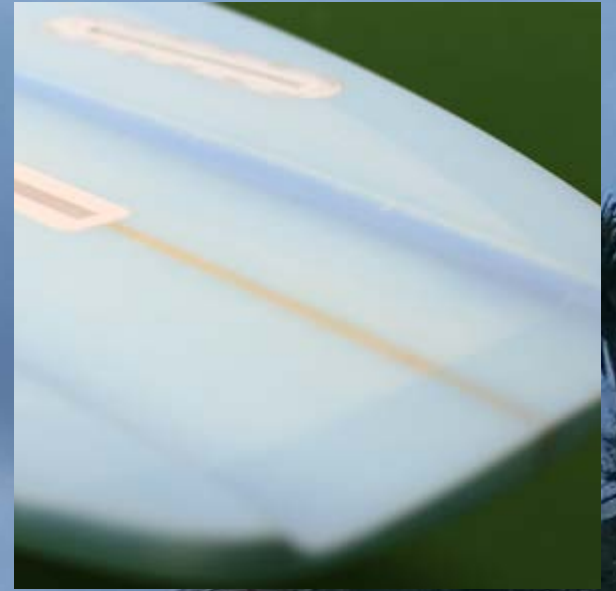
9'3" ABP0903012

2 Future + US box
Square tail
Matt finish

SIZE

9'3" x 22³/₈ x 2⁷/₈ | Vol : 69 ltr





Venon Surfboards



CLASSIC



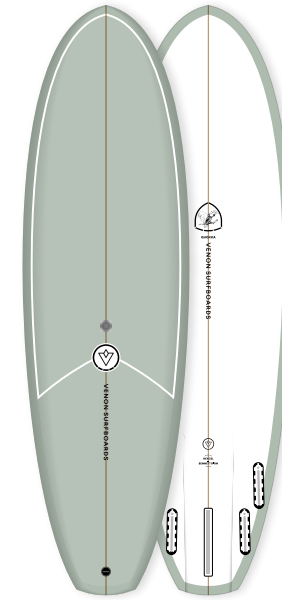
MARBLE



FABRIC



SPLIT BLACK



GRILL SMOKE



PLAIN NAVY

Node

5'9" ABC0509004
5'11" ABC0511015

2 Future
Swallow tail
Polish finish

SIZE

5'9" x 20^{3/4} x 2^{1/2} | Vol : 32.2 ltr
5'11" x 21 x 2^{3/4} | Vol : 37 ltr

Spectre

6'3" ABC0603028
6'6" ABC0606044
6'10" ABC0610022

3 Future
Swallow tail
Polish finish

SIZE

6'3" x 21 x 2^{5/8} | Vol : 38.8 ltr
6'6" x 21^{1/2} x 2^{3/4} | Vol : 44 ltr
6'10" x 22 x 2^{7/8} | Vol : 49.8 ltr

Evo

6'4" ABH0604001
6'6" ABH0606011

2 Future + US box
Squash tail
Polish finish

SIZE

6'4" x 21 x 2^{11/16} | Vol : 39 ltr
6'6" x 21^{3/4} x 2^{3/4} | Vol : 44 ltr

Quokka

6'4" ABH0604020
6'6" ABH0606012

4 Future + US box
Squash tail
Polish finish

SIZE

6'4" x 21^{1/2} x 2^{5/8} | Vol : 40,3 ltr
6'6" x 22 x 2^{3/4} | Vol : 49 ltr

Gopher

6'8" ABH0608009
7'0" ABH0700003

5 Future
Pin tail
Polish finish

SIZE

6'8" x 21^{3/4} x 2^{3/4} | Vol : 44 ltr
7'0" x 22 x 2^{7/8} | Vol : 58 ltr

Venon Surfboards



CLASSIC



PINLINE RED



FABRIC



MARBLE



GLITTER CORAL



RETRO CREAM



OLIVE/BLACK

Egg

7'2" ABK0702005
7'6" ABK0706008

2 Future + US box
Round Pin tail
Polish finish
SIZE
7'2" x 21 x 2^{1/2} | Vol: 44 ltr
7'6" x 20^{7/8} x 2^{7/8} | Vol: 52 ltr

Zeppelin

8'0" ABK0800018

2 Future + US box
Round Pin tail + Wingers
Polish finish
SIZE
8'0" x 24 x 3 | Vol: 69 ltr

Volute

9'0" ABP0900073

2 Future + US box
Squash tail
Polish finish
SIZE
9'0" x 22^{1/2} x 2^{3/4} | Vol: 69 ltr

Longsoul

9'0" ABP0900020

2 Future + US box
Squash tail
Polish finish
SIZE
9'0" x 22^{1/4} x 3 | Vol: 68 ltr

Landmark

9'3" ABP0903012

US box
Squash tail
Polish finish
SIZE
9'2" x 22^{7/8} x 3 | Vol: 69 ltr

Log

9'2" ABP0902021

2 Future + US box
Square tail
Polish finish
SIZE
9'3" x 22^{3/8} x 2^{7/8} | Vol: 69 ltr

Take Hoff 2K21